



Oakland Unified School District

Long Term Enrollment Projections

Board Presentation

June 27, 2007



Agenda

- **Historical Trends**
 - District-wide
 - By Elementary, Middle, High
 - Charter School Growth
- **Projections**
 - District-wide
 - By Elementary, Middle, High
 - By High School Attendance Area
- **Summary**
 - Implications for OUSD
 - Recommended Next steps

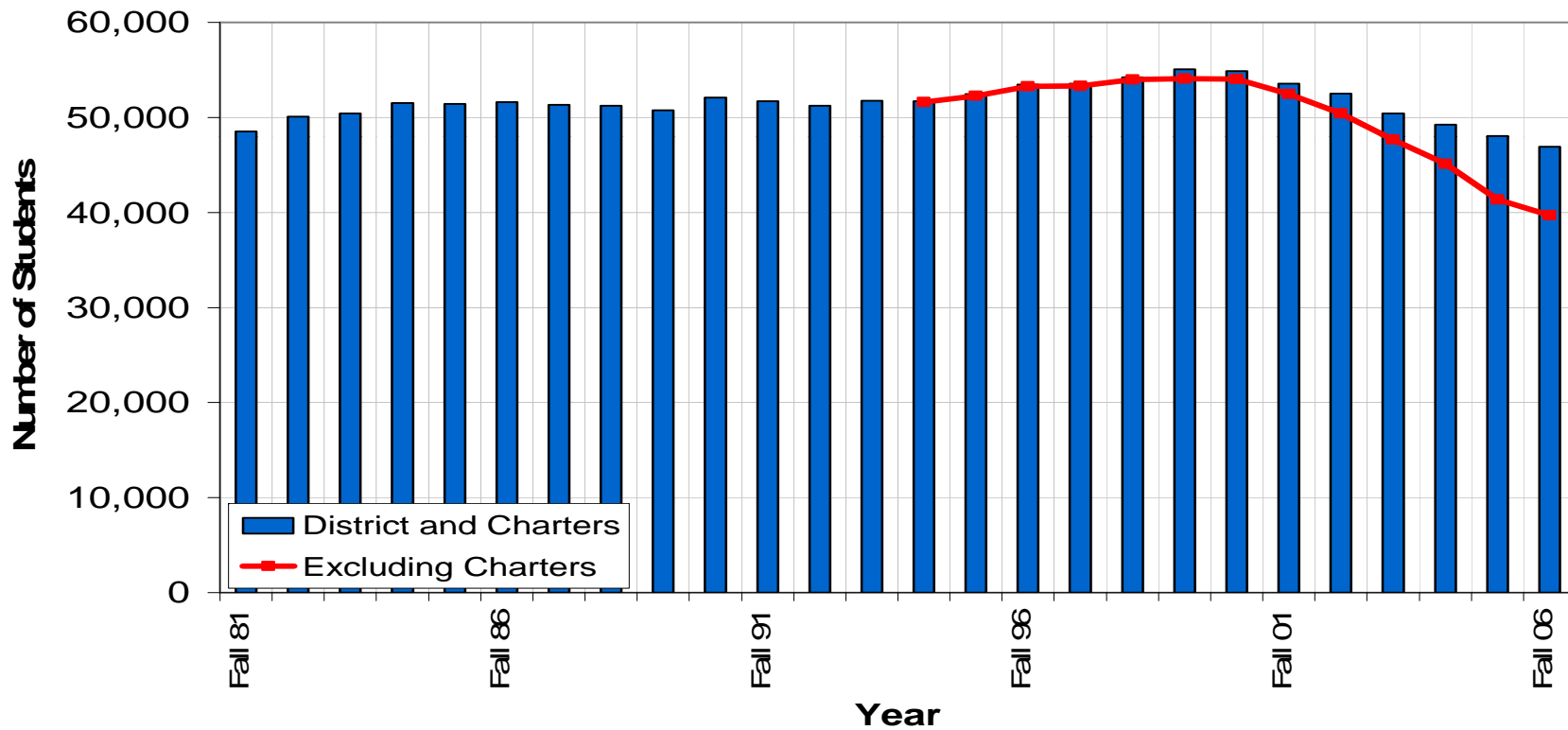
Appendix: Forecast Methodology



Historical Trends: District

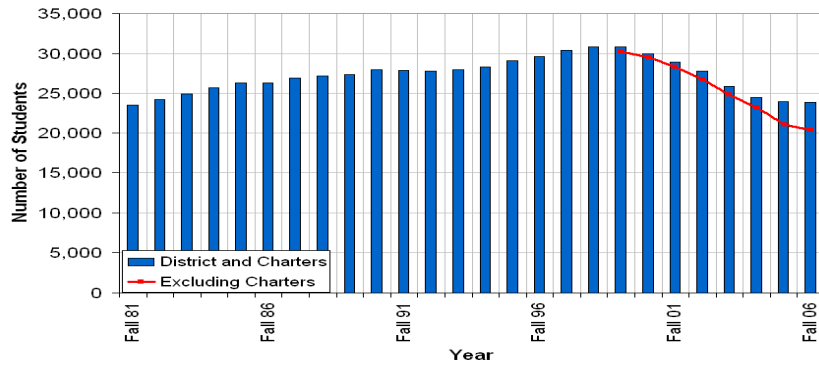
After peaking in 1999, district enrollments have been steadily falling

K-12 Enrollments: 1981-2006



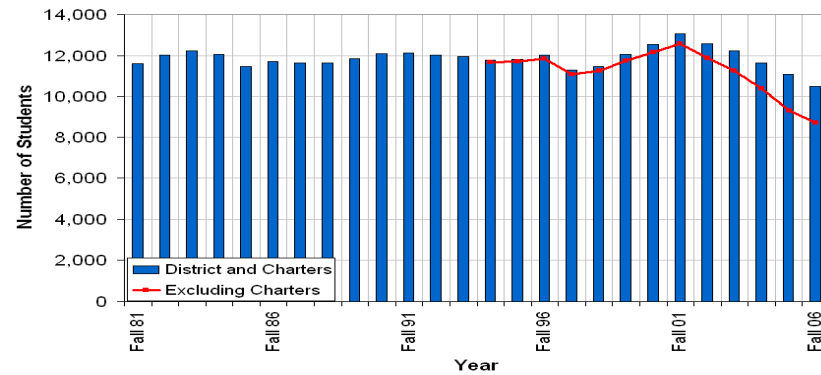
Historical Trends: Elementary, Middle and High Enrollments

K-5 Enrollments: 1981-2006



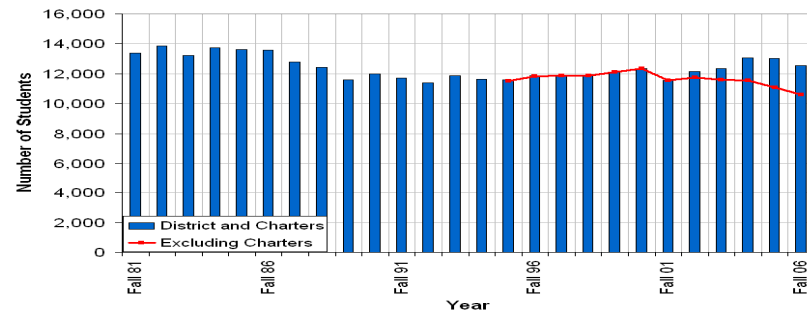
Elementary school enrollments peaked in 1998 and began stabilizing between 2005-2006.

6-8 Enrollments: 1981-2006



Middle school enrollments peaked in 2001 and have been declining ever since.

9-12 Enrollments: 1981-2006

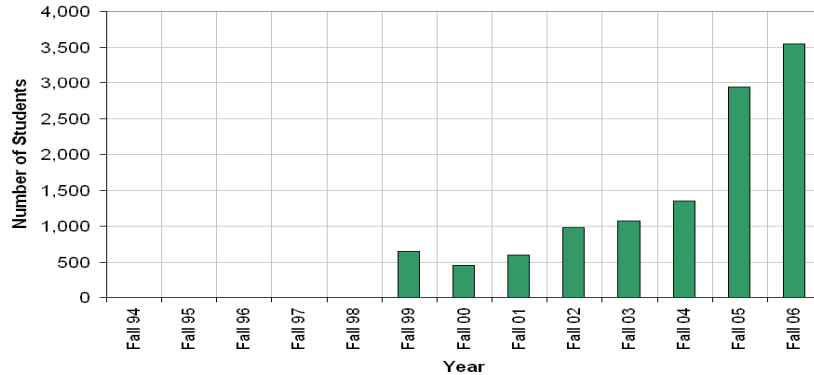


High school enrollments remained stable through the 1990's and have held constant.



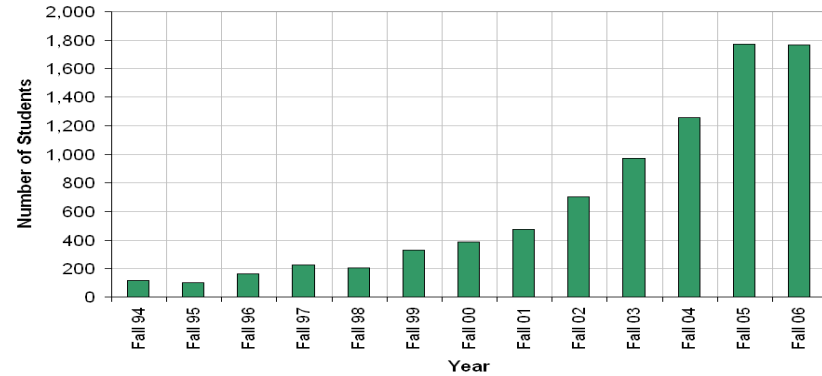
Historical Trends: Charter School Growth

Elementary Charter Students



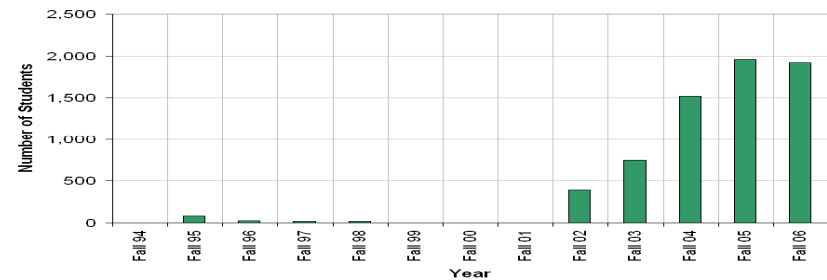
Elementary charter enrollments increased in Fall 2005 with the conversion of Cox and Hawthorne

Middle School Charter Students



Middle school charter enrollment began to increase in 1995

High School Charter Students



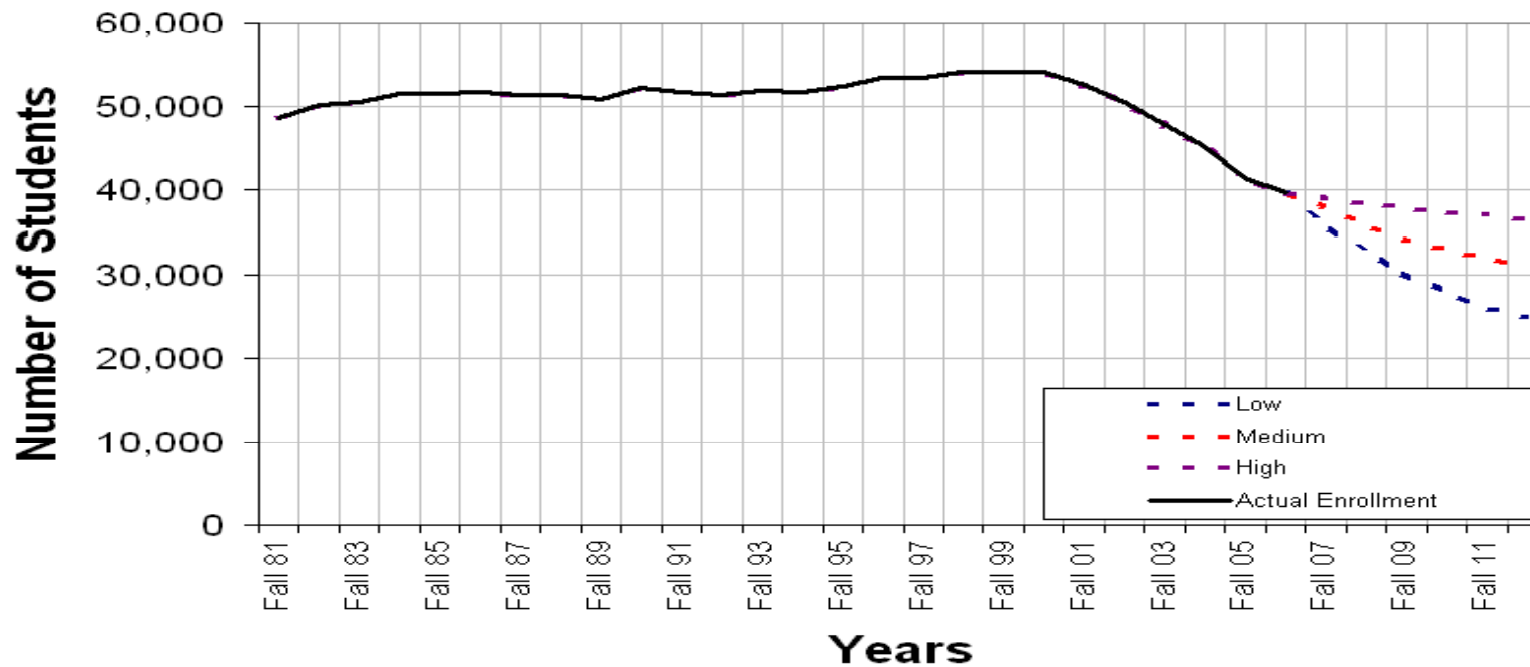
High school charter enrollment increased substantially in 2003



Forecasts: District Wide

Low, Medium and High Scenarios were developed based on different assumptions on kindergarten enrollments, grade progressions, effects from new housing and future charter enrollments.

**K-12 Forecast: 2007-2012
District Only**



Forecasts: District Wide

Over the next five years, the medium scenario projects the district to lose 7,689 students

- Low Scenario projects a loss of 13,501 students over the next five years
- Medium Scenario projects a loss of 7,689 students over the next five years
- High Scenario projects a loss of 2,666 students over the next five years

Medium Scenario: Total K-12						
Year	District	Charter	Total		District Change	
					Change	% Change
2006-07	39,694	7,228	46,922			
2007-08	38,044	7,611	45,655	Fall 2006 to Fall 2007	-1,650	-4%
2008-09	35,825	8,512	44,337	Fall 2007 to Fall 2008	-2,219	-6%
2009-10	34,140	8,997	43,137	Fall 2008 to Fall 2009	-1,685	-5%
2010-11	32,928	9,386	42,314	Fall 2009 to Fall 2010	-1,212	-4%
2011-12	32,005	9,638	41,643	Fall 2010 to Fall 2011	-923	-3%
Total					-7,689	-19%

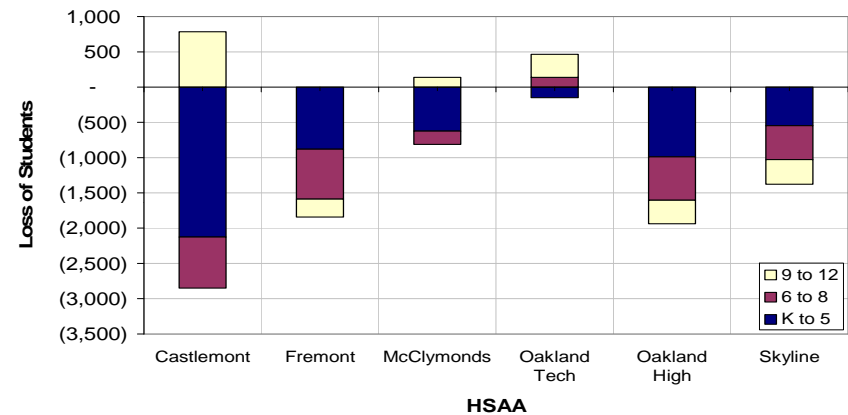


District Only: Historical Enrollment Trends by High School Attendance Areas

Historically, certain high school attendance areas have felt the enrollment decline more than others

- For the purposes of this report, charter residents were assumed to live in the same area they attend school
- Oakland Tech was the only attendance area with an increase in residents
- The number of district residents declined in all attendance areas

2001-2006 Enrollment Loss by HSAA
Measured by Residents of Each HSAA, Charters Included



2001-2006 K-12 Residents by HSAA: Including Charters				
	2001	2006	Loss	% Change HSAA
Castlemont	15,782	13,716	(2,066)	-13%
Fremont	11,510	9,666	(1,844)	-16%
McClymonds	4,495	3,822	(673)	-15%
Oakland Tech	6,080	6,397	317	5%
Oakland High	7,813	5,875	(1,938)	-25%
Skyline	7,457	6,081	(1,376)	-18%
Total	53,137	45,557	(7,580)	-14%

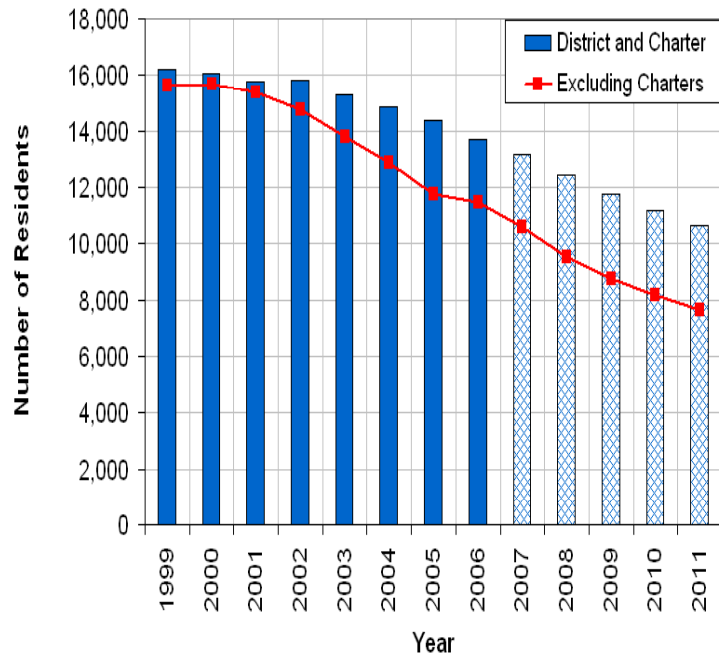


Forecasts by High School Attendance Area: Castlemont and McClymonds *

Castlemont and McClymonds areas are projected to lose a similar percentage of district residents in the next five years due to low grade progressions and charter growth

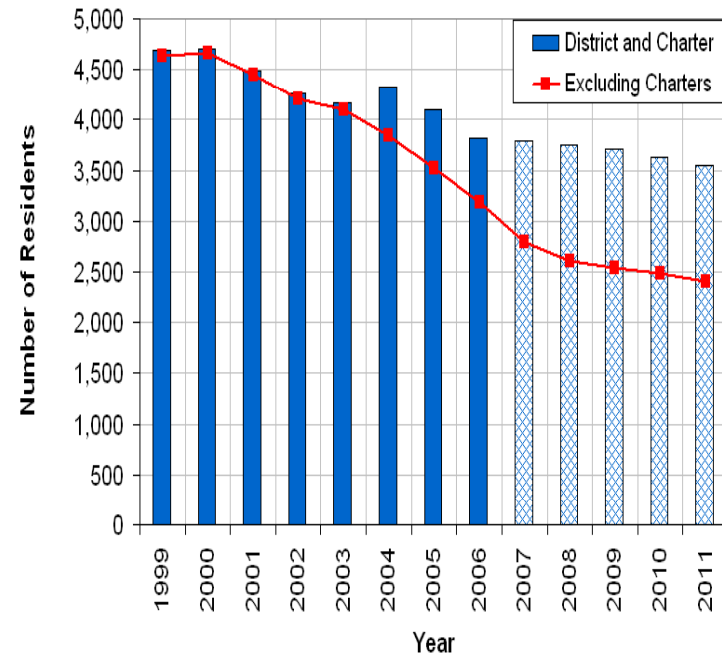
Castlemont K-12 Forecast: 2007-2011

Residents and Charters Located in HSAA



McClymonds K-12 Forecast: 2007-2011

Residents and Charters Located in HSAA



* Forecasts are for all K-12 district and charter residents living in the Castlemont and McClymonds attendance areas

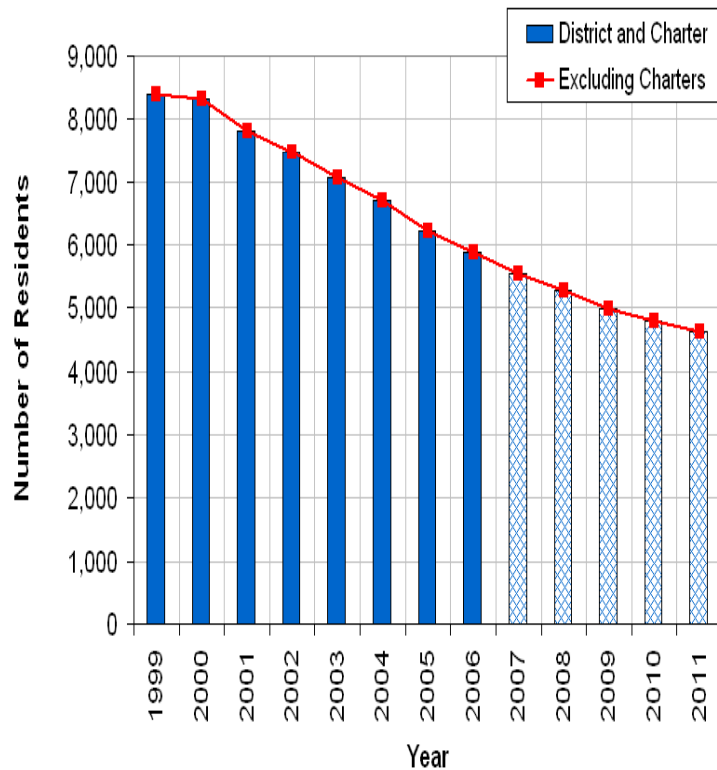


Forecasts by High School Attendance Areas: Oakland High and Skyline*

Oakland High and Skyline are projected to decline at slightly slower rates than the last five years

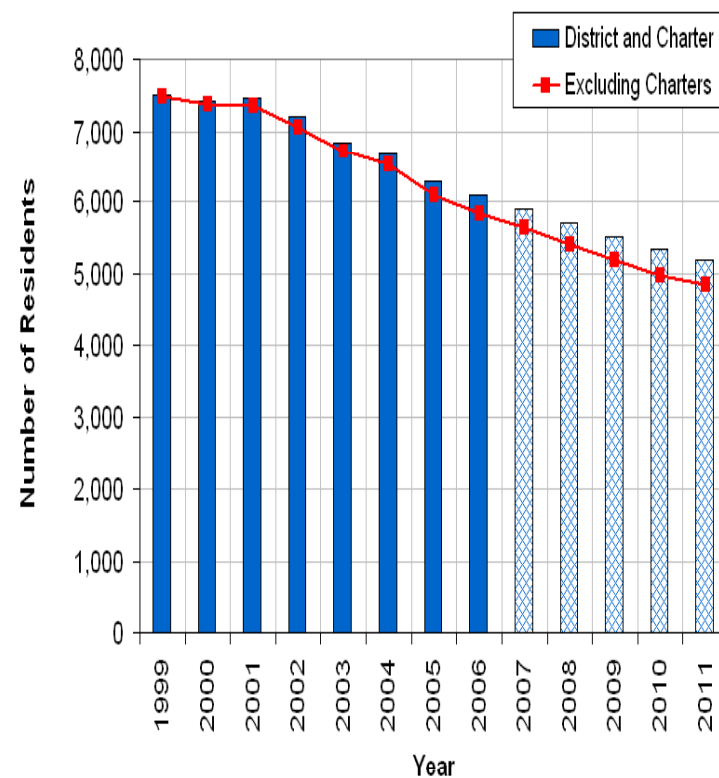
Oakland High K-12 Forecast: 2007-2011

Residents and Charters Located in HSAA



Skyline K-12 Forecast: 2007-2011

Residents and Charters Located in HSAA



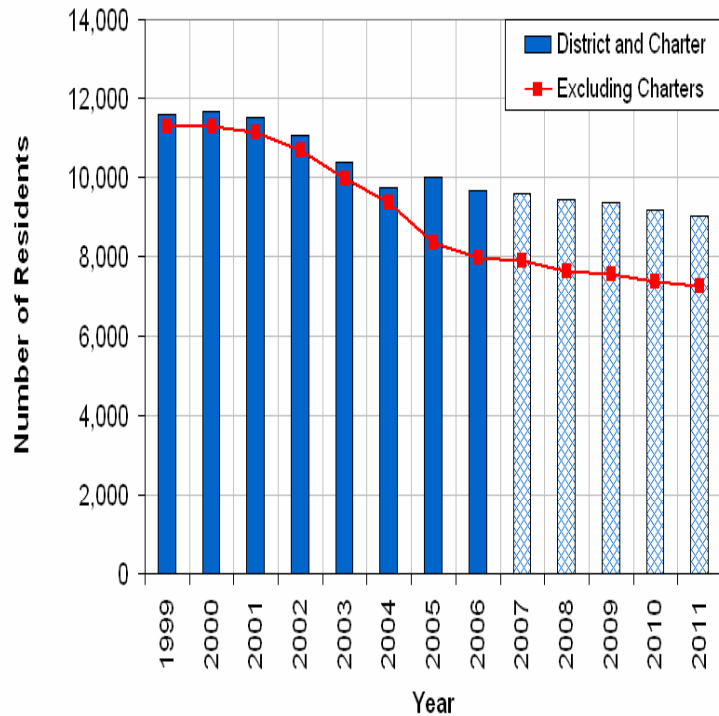
* Forecasts are for all K-12 district and charter residents living in the Oakland High and Skyline attendance areas



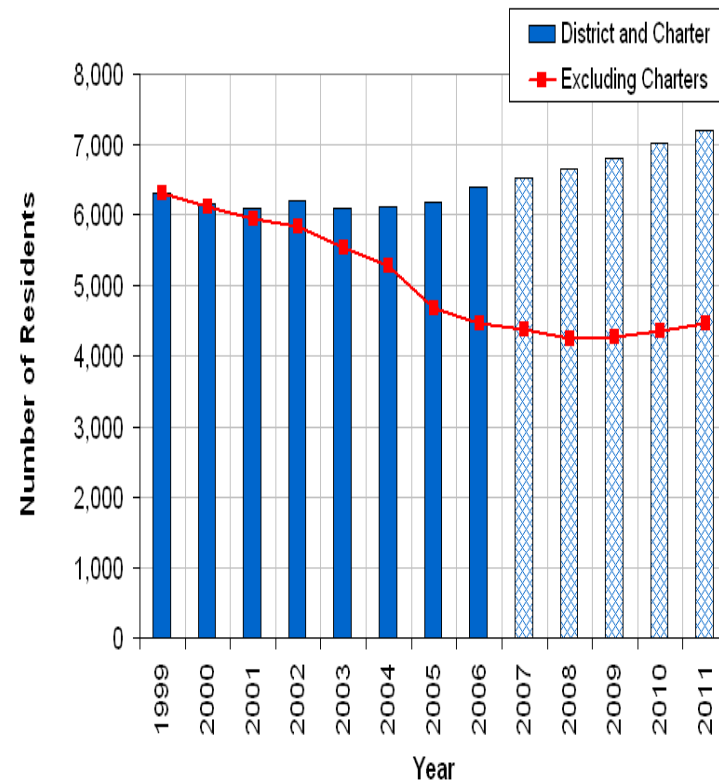
Forecasts by High School Attendance Area: Oakland Tech and Fremont*

Fremont's district resident population is projected to lose fewer students over the next five years. Oakland Tech's district resident population is projected to grow over the next five years.

Fremont K-12 Forecast: 2007-2011
Residents and Charters Located in HSAA



Oakland Tech K-12 Forecast: 2007-2011
Residents and Charters Located in HSAA



* Forecasts are for all K-12 district and charter residents living in the Oakland Tech and Fremont attendance areas



Summary: Key Demographic Trends

- Enrollments have **declined substantially in the last five years**, both including and excluding charters
 - During the last five years, district enrollment has declined by 12,733
- For the purposes of projections, we chose the Medium Scenario to reflect a continuation of the following most recent demographic trends
 - **Births** in Oakland have declined in recent years, suggesting that kindergarten enrollments will decline during the next few years
 - **Out Migration** of the early 2000's seems to have subsided, as indicated by elementary grade progressions; migration rates have appeared to return to historically normal levels
 - **Middle School Grade Progressions** have been consistently and substantially negative during the last five years. This is surprising, since elementary grade progressions have steadily improved in recent years
 - **Charter Enrollments** have increased substantially during the last five years; charter enrollments currently represent 15 percent of total public school enrollments
 - **New Housing Developments** have been added in Oakland but market units have not resulted in substantial enrollment increases. Subsidized housing units are projected to generate students



Summary: Key Highlights from Projections

- Over the next five years, district enrollment is projected to decline by 7,600
- OUSD is projected to continue losing students at all grade levels and in most attendance areas
- Charter schools are projected to grow to represent approximately 22% of all student enrolled in public schools operating in Oakland - approximately 9,600 students - by 2011 (versus 15% currently)
- Enrollment loss will vary across attendance areas and in some select neighborhoods, residents are projected to increase slightly
 - The greatest loss of residents (both total students and as a percentage) is projected in the Castlemont attendance area
 - McClymonds is projected to lose the next greatest percentage of residents—although representing a smaller total number of residents
 - Oakland Tech is projected to maintain its current number of residents over the next five years

2006-2011 Projected Loss of District Students by HSAA *				
	<i>2006</i>	<i>2011</i>	<i>Loss</i>	<i>Loss in HSAA</i>
Castlemont	11,457	7,643	(3,814)	-33%
Fremont	7,963	7,257	(706)	-9%
McClymonds	3,186	2,406	(780)	-24%
Oakland Tech	4,446	4,450	4	0%
Oakland High	5,875	4,633	(1,242)	-21%
Skyline	5,837	4,846	(991)	-17%
Total	40,770	33,246	(7,529)	



Summary: What are the financial implications for OUSD?

- Using an average General Revenue limit of \$5700 per ADA, OUSD has lost and is projected to lose the following General Purpose Revenue as a result of declining enrollment

<u>Year</u>	<u>Student Loss</u>	<u>Loss in General Purpose Revenue</u>
Historical		
2002-2003	2,043	\$11,645,100
2003-2004	2,774	\$15,811,800
2004-2005	2,561	\$14,597,700
2005-2006	3,720	\$21,204,000
2006-2007	1,675	\$9,547,500
Projected		
2007-2008	1,650	\$9,405,000
2008-2009	2,219	\$12,648,300
2009-2010	1,685	\$9,604,500
2010-2011	1,212	\$6,908,400
2011-2012	923	\$5,261,100

- In addition to General Purpose Revenue, OUSD has lost and will continue to lose significant restricted funds as a result of the declining enrollment



Summary: Recommended Next Steps

• In order to address the implications of this continued enrollment decline, the following critical questions must be addressed:

- What is the **long-term sustainability** of each district school in light of these trends?
- Do we need a plan to **reduce the size of Central Office**?
- Do we need to **adjust attendance boundaries** in response to any of these trends?
- What are the highest leverage strategies to **attract families back** into OUSD schools?
 - What are the specific neighborhoods where we are not losing students?
- How do we address the new trend of substantially negative middle school grade progressions?
- In alignment with the 2007-2008 Board of Education Calendar, staff is preparing for the following sessions:
 - **August 2007.** Presentation of Small Schools Evaluation completed by external evaluator
 - **September 2007.** Board development session on the implication of these enrollment trends and evaluation of the questions listed above
 - **December 2007.** 2008-2009 School Portfolio Management adjustment recommendations, including any necessary significant interventions, which may include school closures



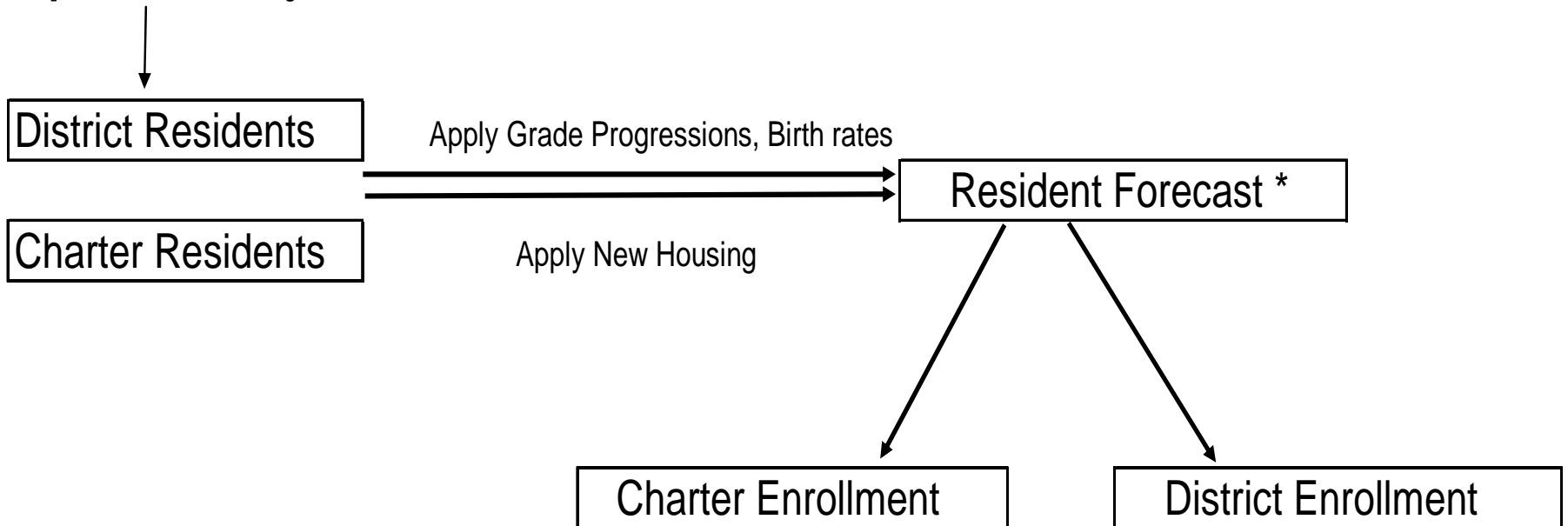
Appendix



Forecast Methodology Overview

Enrollment data and demographic patterns in the community are used to determine a forecast population

Inputs into Projections



* Residents are the students living in the neighborhood, regardless of where they attend school



Forecast Methodology: Residents, Grade Progressions & Birth Rates

➤ District and Charter Residents

Source Data: CBEDS

➤ Kindergarten Enrollment Forecast

✓ Births from 5 years ago are used to guide the forecast

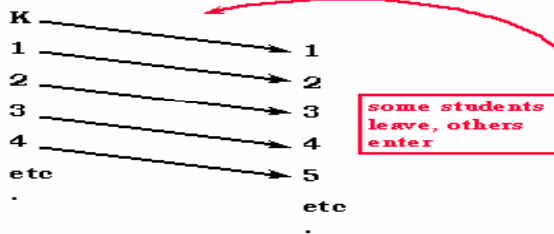
Source Data: County of Alameda Birth Data

✓ Kindergarten/Birth ratio: Kindergarten enrollment divided by Oakland births five years earlier

✓ Kindergarten forecast is calculated using number of births five years earlier multiplied by historical K/B ratio

➤ Grade Progressions: Cohorts of students are advanced to the next grade for each forecast year

Start with today's students by grade, then age them one grade



➤ New housing yields

Source Data: Historical student housing yields for OUSD



Forecast Methodology: Charters

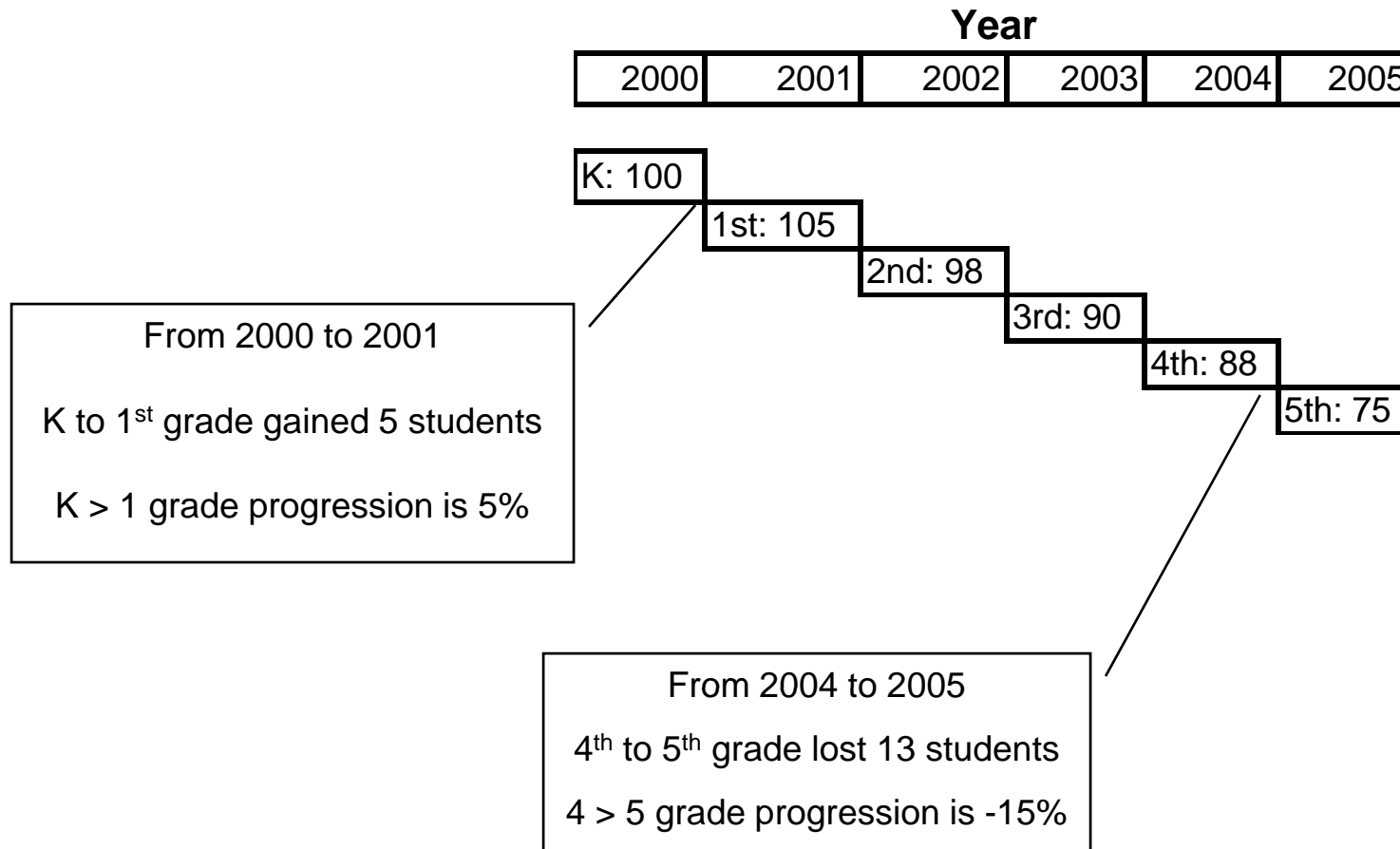
Charter students are an important factor in the demographic analysis

- Determining where charter students live is challenging.
- Charter address data is unavailable and no survey of the parents of charter students has been completed yet.
- For the purposes of this report, we assume charter students would have attended district schools had charters not been available.
 - This is supported by our analysis which finds that private school enrollment has remained stable while charter enrollments have increased.
- We also assume for the purposes of the report that charter students attend school in the same neighborhood in which they live.



Forecast Methodology Grade Progressions: Overview

A grade progressions measures a cohort size from the fall of one school year and the next *



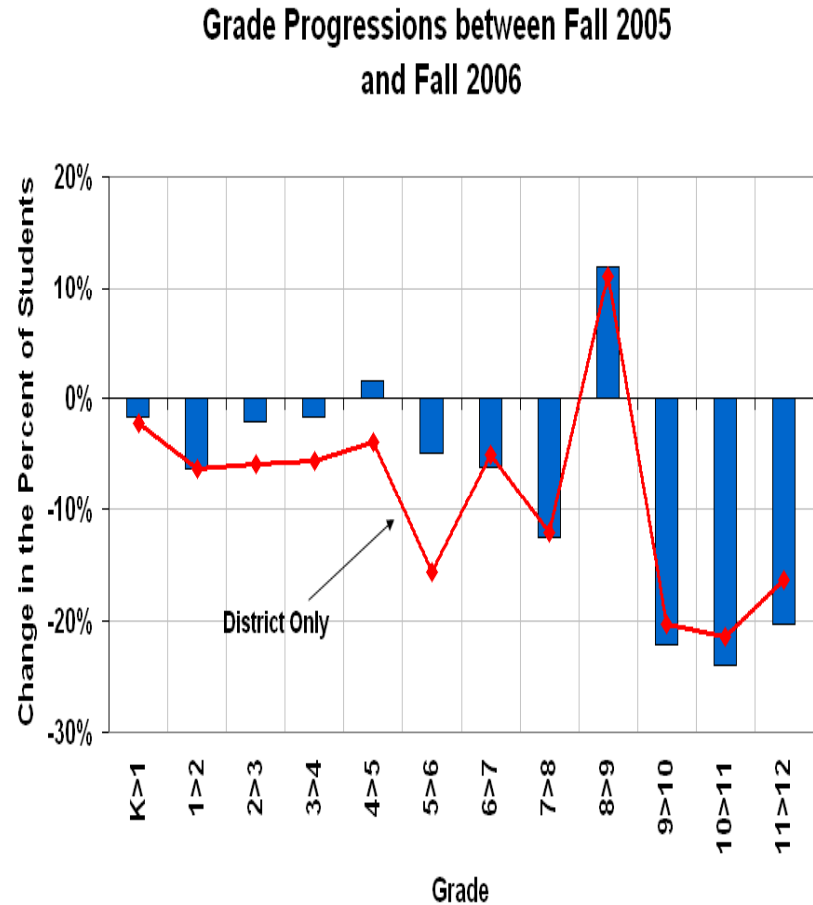
* Positive grade progressions can be as a result of migration into the district, private-district or charter-district transfers. Negative grade progressions can be as a result of migration out of the district, district-private or district to charter transfer or retention.



Forecast Methodology: 2005 to 2006 Grade Progressions

Grade progressions are negative for most grades

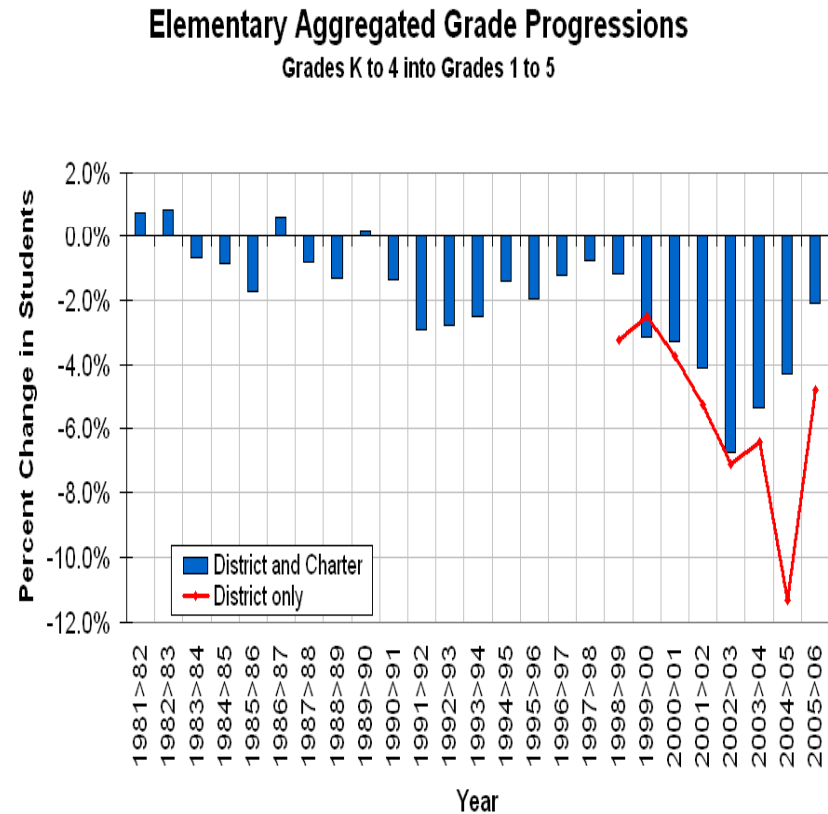
- Negative grade progressions indicate that enrollment shrunk from 2005 to 2006
- Grade progression from 8th to 9th grade is notably positive
- Negative grade progressions are especially significant in the high school grades
- District grade progression is significantly more negative between 5th to 6th grade when some students enter charter middle schools from district elementary schools



Forecast Methodology: Elementary Grade Progressions: With and Without Charters

Elementary grade progressions show the change between the K to 4th cohort from one year into the 1st to 5th cohort the following year

- Bars show elementary school grade progressions with charters; red line show district only grade progressions
- District elementary grade progressions began a downward turn in 1998
- Elementary grade progressions have historically been negative
- Fall 2005 to Fall 2006 district and charter elementary grade progressions have returned to historical rates

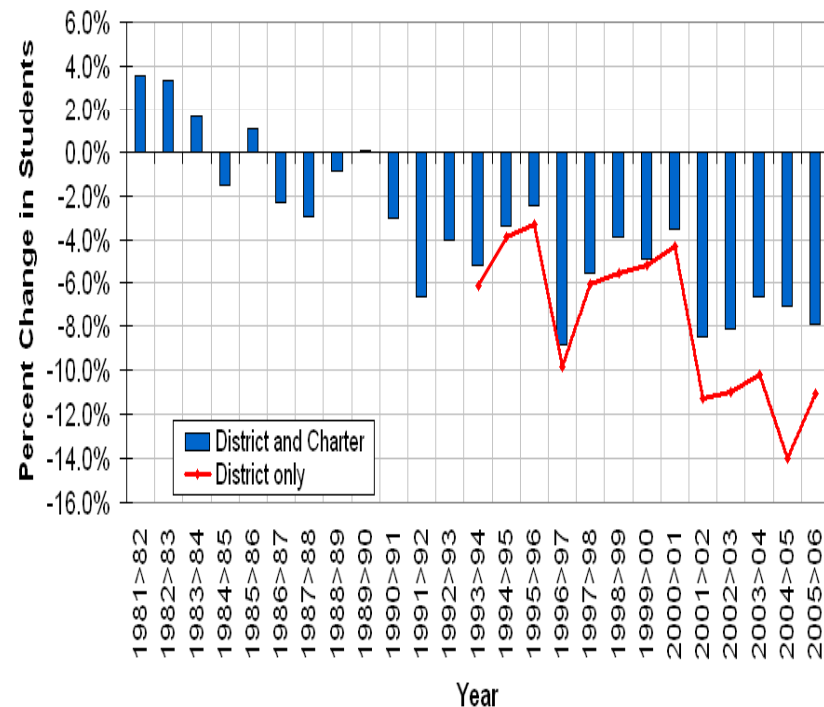


Forecast Methodology: Middle Grade Progressions: With and Without Charters

Middle school grade progressions show the change between the 5th to 7th cohort from one year into the 6th to 8th cohort the following year

- Middle school grade progressions have been lower than the historical average the last five years
- District middle school grade progressions have not returned to historical average.
- Aggregated grade progressions with district and charter students are also low; middle school students are dropping out or leaving the district altogether.

Middle School Aggregated Grade Progressions
Grades 5 to 7 into Grades 6 to 8

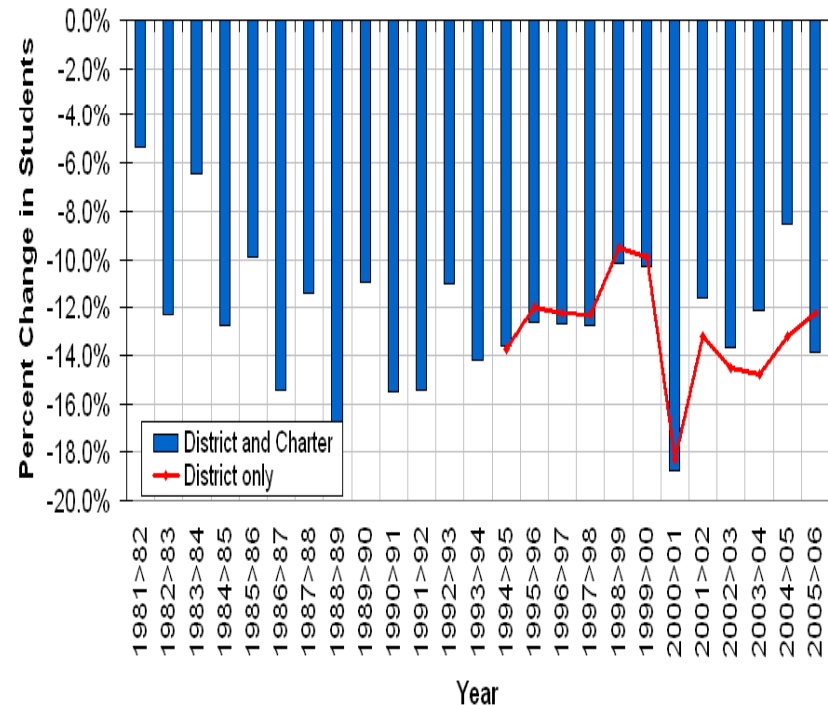


Forecast Methodology: High Grade Progressions: With and Without Charters

High school grade progressions show the change between the 8th to 11th cohort from one year into the 9th to 12th cohort the following year

- High school grade progressions are closer to the historical average than elementary or middle schools
- District high school grade progressions are notably negative and variable
- High school grade progressions are comparable to historical averages
- In most years, high schools cohorts lose between 10 and 16 percent of their population

High School Aggregated Grade Progressions
Grades K to 4 into Grades 1 to 5



Forecast Methodology: New Housing Development

Student yields vary by the characteristics of the housing unit

- Oakland has gained many new housing units during the last decade
- Student yields vary by the type, size, price, location of the new housing unit
- Student yields are based on recently constructed housing in Oakland
- High rise, luxury apartments have significantly lower yields than Below Market Rate units

Student Yield Assumptions

	Low Forecast	Medium Forecast	High Forecast
Below Market Rate (BMR)	0.40	0.70	0.70
Single Family	0.05	0.10	0.15
Apartments	0.00	0.05	0.10
Condominiums	0.00	0.02	0.05
General Market Rates	0.00	0.02	0.05



Forecast Methodology: Planned New Housing Developments

Projected Number of Students from New Housing

HSAA	Name of Housing Project	# Units	Type of Housing	2006	2007	2008	2009	2010	2011	2012
Fremont	Lion Creek Crossings	214	BMR	32	19	20	15			
Fremont	Lion Creek Crossings	248	Market	1	2	2	2	2		
Fremont	Seven Directions	36	BMR			14				
Fremont	Fruitvale Village Phase II	447	Market		3	3	3	3	3	
Fremont Total				33	23	39	19	4	3	0
Oakland Tech	Wood Street Project	99	BMR				40			
Oakland Tech	Oak to Ninth	2635	Market					6	6	6
Oakland Tech	Oak to Ninth	465	BMR					105	105	116
Oakland Tech	Uptown Project	532	Apts			8	8			
Oakland Tech	Uptown Project	133	BMR			46	48			
Oakland Tech Total				0	0	54	95	111	111	122
Skyline	Leona Quarry	545	Market	3	3	3	3	3	2	
Skyline Total				3	3	3	3	3	2	
Total				35	26	95	117	118	115	122

* Other housing planned for Oakland—11th Street, Valdez Project, 46th Ave, Market Street, West Oakland, Ford Street, 9th Street, Madison Lofts, Pacific Cannery Lofts, Red Star Yeast, 2nd Street, Broadway, Harrison, Jefferson, Key Route Landing, Zephyr Gate, Embarcadero Cove, Skyline Ridge Estates, Emerald Parc, Lincoln Senior and MacArthur Blvd Senior have insignificant student yields.



Forecast Methodology: Assumptions

Forecast Assumptions

	Low Forecast	Medium Forecast	High Forecast
1. Enrollment base	Same as Medium forecast	Historical CBEDS enrollments from CDE	Same as Medium forecast
2. Grade progressions (impact from housing turnover)	The Medium Forecast's grade progressions reduced by 97% and 99%	The most current set of grade progressions: the set of grade progressions between Fall 2005 and Fall 2006	The Medium Forecast's grade progressions increased by 101%, 103%, and 105%
3. Kindergarten to birth ratio	Gradually declining to 57%	The most recent K/B ratio (61%)	gradually increasing to 67%
4. Housing forecast	Same as Medium forecast	Explicit housing forecasts provided for: Lions Crossings, Leona Quarry, Uptown Project, Fruitvale Transit Village II, Seven Directions, and Wood Street Project (See Table 3, page x)	Same as Medium forecast
5. Student yields	.4 for BMR units .05 for SFU .05 for MFU 0 for condos 0 for general market rate units	.7 for BMR units .1 for SFU .1 for MFU .02 for condos .02 for general market rate units	.7 for BMR units .15 for SFU .15 for MFU .05 for condos .05 for general market rate units
6. Charter enrollment forecast	The share of charter enrollment reaches 18 percent in 2012	Charter enrollment becomes 22 percent of all enrollments in 2010 and remains level (up from 15 percent in 2006)	The share of charter enrollment continues to increase each year, reaching 29 percent of all enrollments by 2012



Charters in OUSD

Charter enrollments have become a significant portion of Oakland school enrollments

Name of Charter	Grades	2006 Enrollment	Attendance Area	
Millsmont Academy	K to 8th	271	Castlemont	→ Oakland High
Reems (Ernestine) Academy	K to 8th	348	Castlemont	0
Monarch Academy	K to 5th	352	Castlemont	Castlemont
Wilson (Lionel) Prep Academy	6th to 12th	468	Castlemont	2,473
Oakland Aviation High	9th	57	Castlemont	→
LPS -College Park	9th to 10th	193	Castlemont	→
Oakland Unity HS	9th to 12th	198	Castlemont	→
University Preparatory	9th to 12th	586	Castlemont	→
Berkeley Maynard Academy	K to 5th	352	Oakland Tech	Oakland Tech
East Bay Cons. Corp - Elementa	K to 5th	187	Oakland Tech	2,052
North Oakland Community CS	K to 5th	103	Oakland Tech	→
East Oakland Leadership Acad.	K to 5th	101	Oakland Tech	→
Lighthouse Comm Charter	to 4th, 6th to 8th	360	Oakland Tech	→
Bay Area Technology	6th to 8th	205	Oakland Tech	→
CA College Preparatory Academ	6th to 8th	140	Oakland Tech	→
Oakland School for the Arts	6th to 12th	353	Oakland Tech	→
Oasis High School	9th to 12th	150	Oakland Tech	Fremont
Lighthouse Com. High School	9th to 10th	101	Oakland Tech	→
Dolores Huerta Learning	K to 8th	206	Fremont	1,703
Education for Change at Cox Ele	K to 5th	610	Fremont	→
East Oakland Community Ch Sch	K to 3rd	474	Fremont	→
Upper Elementary Ed for Chang	4th to 5th	225	Fremont	→
Oakland Charter Academy	6th to 8th	145	Fremont	→
Youth Employment Partnership	9th to 12th	43	Fremont	→
Junior Space Exploration	6th	33	McClymonds	756
Oakland Military Institute	6th to 12th	559	McClymonds	→
Space Exploration Academy	9th	14	McClymonds	→
East Bay Cons. Corp - High	9th to 12th	150	McClymonds	→
American Indian Public Ch Schl	5th to 8th	173	Skyline	Skyline
American Indian Public HS	9th to 10th	71	Skyline	244
Total		7,228		

