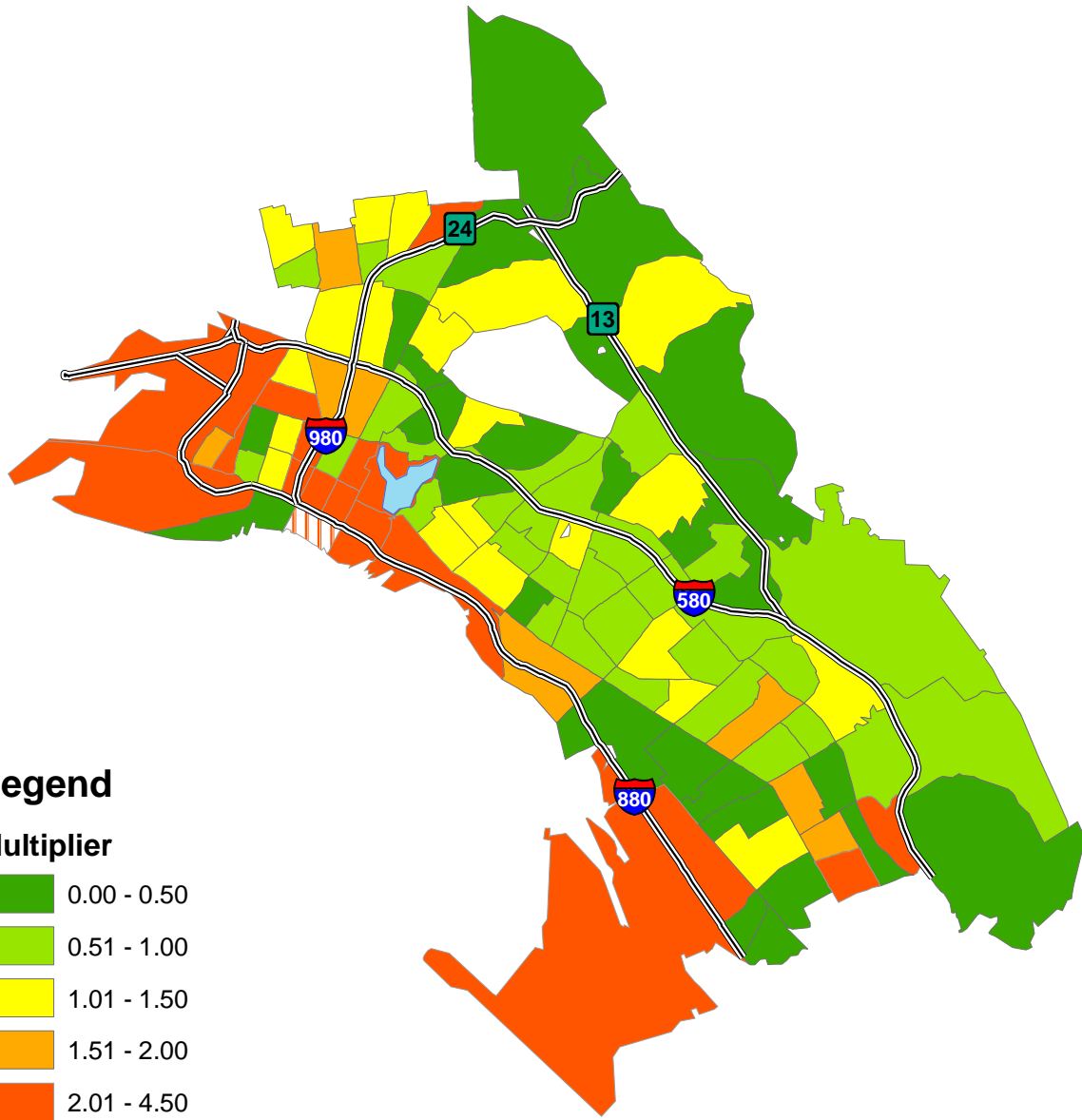


Concentration of Off-Sale ABC Licenses in Oakland by Census Tract



Legend

Multiplier

- 0.00 - 0.50
- 0.51 - 1.00
- 1.01 - 1.50
- 1.51 - 2.00
- 2.01 - 4.50
- 4.51 - 55.37

Undue Concentration of retail licenses with respect to population is defined in the California Administrative Code under Title 4. Division 1. Article 11.61.3.A.2. The multiplier is this map is the ratio of actual licenses to allowed licenses. A multiplier of 2 has twice the allowed number of off sale licenses, 0.5 has half the allowed licenses and 1 is at the allowed level.

0 0.75 1.5 2.25 3 Miles



Source: CA ABC, Courtesy of Alameda County Public Health Department
Map produced by Urban Strategies Council